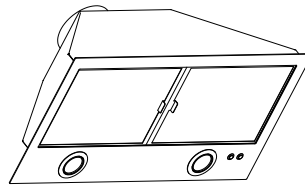
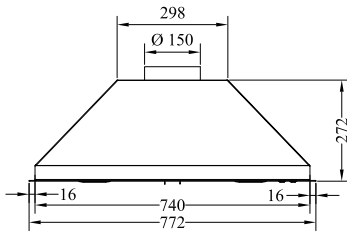
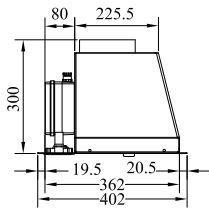


KAI90-120-150**EINBAUABZUGSHAUBE**

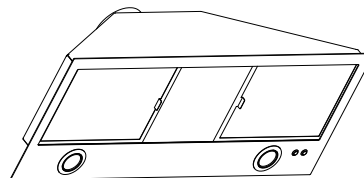
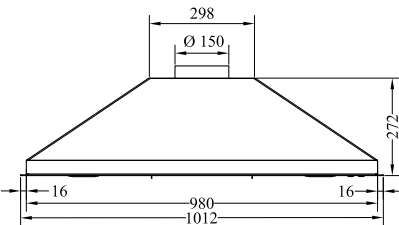
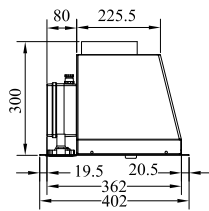
mm 900-1200-1500x400

für hohe Temperaturen, geeignet für Holzherde

**KAI90****Inox**

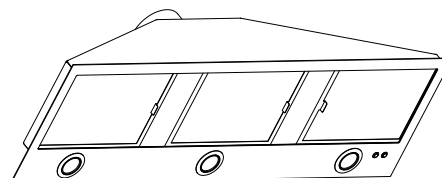
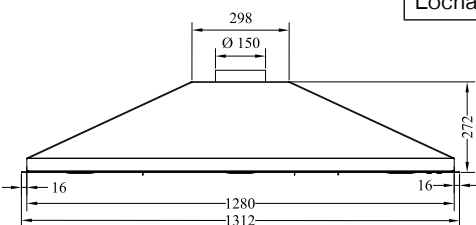
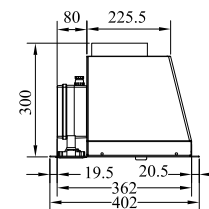
- maximale Fördermenge mc/ora 900
- 185 W Motor, 4 Geschwindigkeiten
- 2 Ledlampen
- Abluftanschluss \varnothing 150 mm
- Inox-Fettfilter n°2

Lochabmessung für den Einbau mm 745x375

**KAI120****Inox**

- maximale Fördermenge mc/ora 900
- 185 W Motor, 4 Geschwindigkeiten
- 2 Ledlampen
- Abluftanschluss \varnothing 150 mm
- Inox-Fettfilter n°2

Lochabmessung für den Einbau mm 985x375

**KAI150****Inox**

- maximale Fördermenge mc/ora 900
- 185 W Motor, 4 Geschwindigkeiten
- 3 Ledlampen
- Abluftanschluss \varnothing 150 mm
- Inox-Fettfilter n°3

Lochabmessung für den Einbau mm 1285x375